



Milling Series

HY-PRO

Volume 3



Index



HYP-CR-HI-WEMS
4 Flutes - Variable lead type PAGE 4

HYP-CR-HD-WEMS
4 Flutes - Variable lead type PAGE 5

HYP-F1
1 Flute - Straight Shank PAGE 6

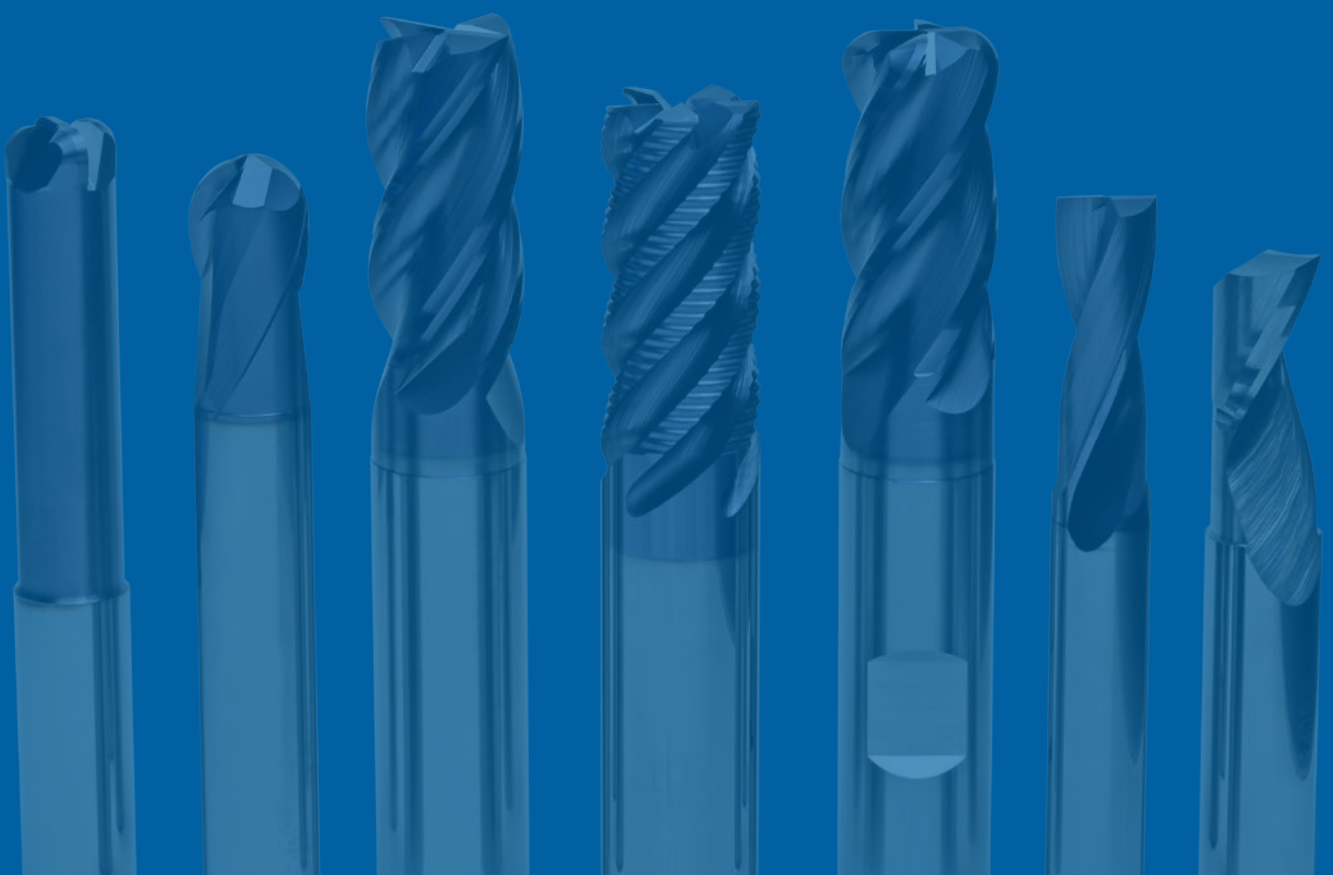
HYP-HI-(W)EMS
4 Flutes - Variable lead type PAGE 7

HYP-HP-WRESF
For general roughing PAGE 8

HYP-HS-CRE
4 Flutes - Corner radius PAGE 9

HYP-SB-EBD
2 Flutes - Center cutting PAGE 10

HYP-ZDS
2 Flutes - counterboring PAGE 11



Milling

- 4 flutes
- Variable lead type

- 4 Schneiden
- Variabler Führung

- 4 denti
- Passo variabile

- 4 lèvres
- Hélice variable

- 4 ağızlı
- Değişken helisel açılı tip

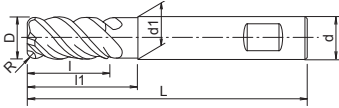
- 4 skær
- Variabel helix

- 4 skär
- Variabel helix

- 4 labios
- Introduce la helice variable

- 4 режущих кромки
- С переменным углом наклона витков

- 4 ostrzowy
- Z nierównomiernym rozkładem zębów



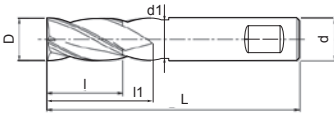
EDP	D	R	L	l	l1	d1	d	Price
4832004011	4	0,5	57	11	-	-	6	
4832005011	5	0,5	57	13	-	-	6	
4832006011	6	0,5	57	13	20	5,8	6	
4832006012	6	1	57	13	20	5,8	6	
4832006013	6	1,5	57	13	20	5,8	6	
4832006014	6	2	57	13	20	5,8	6	
4832008011	8	0,5	63	19	25	7,8	8	
4832008012	8	1	63	19	25	7,8	8	
4832008013	8	1,5	63	19	25	7,8	8	
4832008014	8	2	63	19	25	7,8	8	
4832010011	10	0,5	72	22	30	9,8	10	
4832010012	10	1	72	22	30	9,8	10	
4832010013	10	1,5	72	22	30	9,8	10	
4832010014	10	2	72	22	30	9,8	10	
4832010016	10	3	72	22	30	9,8	10	
4832012011	12	0,5	83	26	38	11,8	12	
4832012012	12	1	83	26	38	11,8	12	
4832012013	12	1,5	83	26	38	11,8	12	
4832012014	12	2	83	26	38	11,8	12	
4832012016	12	3	83	26	38	11,8	12	
4832016011	16	0,5	92	32	45	15,8	16	
4832016012	16	1	92	32	45	15,8	16	
4832016014	16	2	92	32	45	15,8	16	
4832016016	16	3	92	32	45	15,8	16	
4832016018	16	4	92	32	45	15,8	16	
4832020012	20	1	104	38	60	19,8	20	
4832020014	20	2	104	38	60	19,8	20	
4832020016	20	3	104	38	60	19,8	20	
4832020018	20	4	104	38	60	19,8	20	
4832020020	20	5	104	38	60	19,8	20	

Applications - Anwendungen - Applicazioni - Applications - Applikation - Applikation - Aplicaciones - Применение - Uygulama - Zastosowania

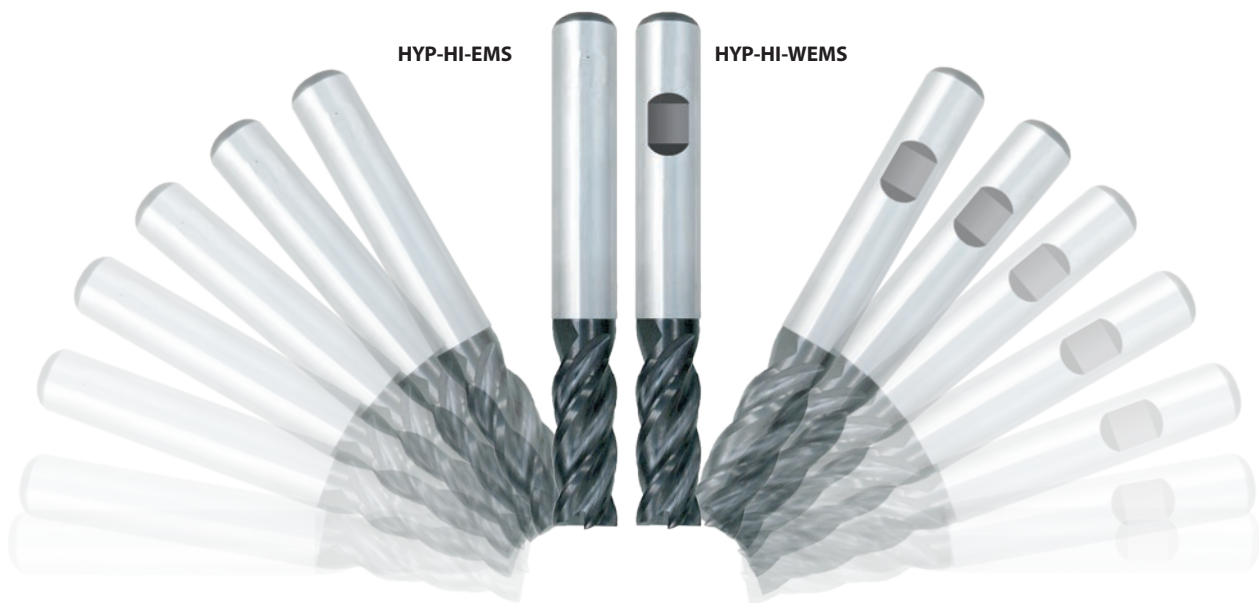
~40 HRC	~45 HRC	~55 HRC	~60 HRC	~65 HRC	SUS ~35 HRC	GG-GGG ~350 HB
☉	☉	○			☉	☉
Cu	Al	Graphite	Ti	HRS	Plast.	
			☉	☉		

Milling

- 4 flutes
- 4 Schneiden
- 4 denti
- 4 lèvres
- 4 açızlı
- Variable lead type
- Variabler Führung
- Passo variabile
- Hélice variable
- Değişken helisel açılı tip
- 4 skær
- 4 skär
- 4 labios
- 4 режущих кромки
- 4 ostrzowy
- Variabel helix
- Variabel helix
- Introduire la helice variable
- С переменным углом наклона витков
- Z nierównomiernym rozkładem zębów



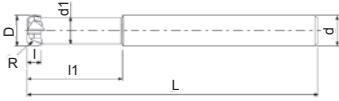
EDP	Type	D	L	l	l1	d1	d	Price
48320040	HYP-HI-EMS	4	57	11	-	-	6	
48320050	HYP-HI-EMS	5	57	13	-	-	6	
48320060	HYP-HI-EMS	6	57	13	20	5,8	6	
48320080	HYP-HI-EMS	8	63	19	25	7,8	8	
48320100	HYP-HI-EMS	10	72	22	30	9,8	10	
48320120	HYP-HI-EMS	12	83	26	38	11,8	12	
48320160	HYP-HI-EMS	16	92	32	45	15,8	16	
48320200	HYP-HI-EMS	20	104	38	60	19,8	20	
483200401	HYP-HI-WEMS	4	57	11	-	-	6	
483200501	HYP-HI-WEMS	5	57	13	-	-	6	
483200601	HYP-HI-WEMS	6	57	13	20	5,8	6	
483200801	HYP-HI-WEMS	8	63	19	25	7,8	8	
483201001	HYP-HI-WEMS	10	72	22	30	9,8	10	
483201201	HYP-HI-WEMS	12	83	26	38	11,8	12	
483201601	HYP-HI-WEMS	16	92	32	45	15,8	16	
483202001	HYP-HI-WEMS	20	104	38	60	19,8	20	



Applications - Anwendungen - Applicazioni - Applications - Applikation - Applikation - Aplicaciones - Применение - Uygulama - Zastosowania						
~40 HRC	~45 HRC	~55 HRC	~60 HRC	~65 HRC	SUS ~35 HRC	GG-GGG ~350 HB
☉	☉	○			☉	☉
Cu	Al	Graphite	Ti	HRS	Plast.	
			☉	☉		

Milling

- 4 flutes
- 4 Schneiden
- 4 denti
- 4 lèvres
- 4 ağizli
- Corner radius
- Mehrschneider mit Eckenradius
- Frese toriche
- Fraise à rayon
- Değişken helisel açılı tip
- 4 skær
- 4 skär
- 4 labios
- 4 режущих кромки
- 4 ostrzowy
- hjørneradius
- Hörnradie
- Vertice radio
- Концевые фрезы с радиусом
- Z nierównomiernym rozkładem zębów

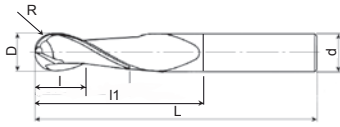


EDP	D	R	L	l1	l	d1	d	ZΔ	Price
48340060	6	1,5	57	24	2,5	5	6	4	
48340080	8	2	63	32	3,5	7	8	4	
48340100	10	2	72	40	4	9	10	4	
48340120	12	3	83	48	5	11	12	4	

Applications - Anwendungen - Applicazioni - Applications - Applikation - Applikation - Aplicaciones - Применение - Uygulama - Zastosowania						
~40 HRC	~45 HRC	~55 HRC	~60 HRC	~65 HRC	SUS ~35 HRC	GG-GGG ~350 HB
☉	☉	☉	☉	○		☉
Cu	Al	Graphite	Ti	HRS	Plast.	

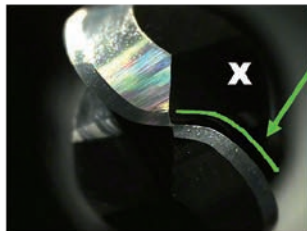
Milling

- 2 flutes
- 2 Schneiden
- 2 denti
- 2 lèvres
- 2 ağızlı
- Center cutting
- Zentrumschneidend
- Taglio al centro
- Coupe au centre
- Merkezden kesme
- 2 skær
- 2 skär
- 2 labios
- 2 режущих кромки
- 2 ostrzowy
- Borende
- Borrande
- Corte central
- Режущий центр
- Centralne ostrze



EDP	D	R	L	l	l1	d	ZΔ	Price
48350030	3	1,5	57	4	9	6	2	
48350040	4	2	57	5	12	6	2	
48350050	5	2,5	57	6	15	6	2	
48350060	6	3	57	7	18	6	2	
48350080	8	4	63	9	20	8	2	
48350100	10	5	72	11	25	10	2	
48351200	12	6	83	13	25	12	2	

HYP-SB-EBD Geometry



Long cutting edge

$X > Y$

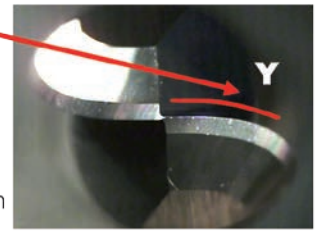
- Less torque
- Less heat build-up
- Better surface finish
- Long tool life

Standard Geometry

Short cutting edge

$X > Y$

- Normal torque
- Normal heat build-up
- Average surface finish
- Standard tool life

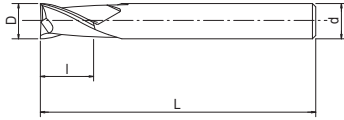


Applications - Anwendungen - Applicazioni - Applications - Applikation - Applikation - Aplicaciones - Применение - Uygulama - Zastosowania

~40 HRC	~45 HRC	~55 HRC	~60 HRC	~65 HRC	SUS ~35 HRC	GG-GGG ~350 HB
⊙	⊙	⊙			○	⊙
Cu	Al	Graphite	Ti	HRS	Plast.	
○	○					

Milling

- 2 flutes
- Counterboring
- 2 Schneiden
- Anspiegelfläche
- 2 denti
- Lamatura
- 2 lèvres
- Chanfreinage
- 2 ağızlı
- Kontur Baralama
- 2 skær
- Undersænkning
- 2 skär
- örsänkning
- 2 labios
- Taladrado plano
- 2 режущих кромки
- для фрезерования, зенкования, обточки
- 2 ostrzowy
- Pogłębianie



EDP	D	L	l	d	ZΔ	Price
48370040	4	50	11	6	2	
48370050	5	60	13	6	2	
48370060	6	60	13	6	2	
48370070	7	70	16	8	2	
48370080	8	70	19	8	2	
48370090	9	80	19	10	2	
48370100	10	80	22	10	2	

Applications - Anwendungen - Applicazioni - Applications - Applikation - Applikation - Aplicaciones - Применение - Uygulama - Zastosowania						
~40 HRC	~45 HRC	~55 HRC	~60 HRC	~65 HRC	SUS ~35 HRC	GG-GGG ~350 HB
☉	○				☉	☉
Cu	Al	Graphite	Ti	HRS	Plast.	
	○					



shaping your dreams

OSG EUROPE LOGISTICS

Avenue Lavoisier 1
B-1300 Z.I. Wavre - Nord
Belgium
Tel.: +32 10 23 05 07
Fax: +32 10 23 05 51
info@osgeurope.com

OSG BELUX

Avenue Lavoisier 1
B-1300 Z.I. Wavre - Nord
Belgium
Tel.: +32 10 23 05 11
Fax: +32 10 23 05 31
info@osg-belgium.com

OSG FRANCE

Parc Icade, Paris Nord 2
Immeuble "Le Rimbaud"
22 Avenue des Nations
CS66191 - 93420 Villepinte
France
Tel.: +33 1 49 90 10 10
Fax: +33 1 49 90 10 15
sales@osg-france.com

OSG NETHERLANDS

Bedrijfsweg 5 - 3481 MG Harmelen
Postbus 50 - 3480 DB Harmelen
The Netherlands
Tel.: +31 348 44 2764
Fax: +31 348 44 2144
info@osg-nl.com

OSG UK

Shelton house, 5 Bentalls
Pipps Hill Ind Est, Basildon Essex SS14 3BY
United Kingdom
Tel.: +44 845 305 1066
Fax: +44 845 305 1067
sales@osg-uk.com

SLOVAKIA

Branch office of OSG Europe Logistics s.a.
Tel (SK) +421 2 4329 1295
Tel (BE) +32 10 23 05 07
Fax (BE) +32 10 23 05 51
sales-osgsvk@osgeurope.com

OSG POLAND Sp. z.o.o.

ul. Spółdzielcza 57
05-074 Halinów
Poland
Tel: +22 760 82 71
Fax: +22 760 82 71
osg@osg-poland.com

OSG GERMANY

Karl-Ehmann-Str. 25
D - 73037 Göppingen
Germany
Tel.: +49 7161 6064 - 0
Fax: +49 7161 6064 - 444
info@osg-germany.de

OSG SCANDINAVIA

(For Scandinavian countries)
Langebjergvaenget 16
4000 Roskilde
Denmark
Tel.: +45 46 75 65 55
Fax: +45 46 75 67 00
osg@osg-scandinavia.com

SWEDEN

Branch office of OSG SCANDINAVIA
Abrahams Gränd 8
295 35 Bromölla
Sweden
Tel: +46 40 41 22 55
Fax: +46 40 41 32 55
osg@osg-scandinavia.com

OSG COMAHER

Bekolarra 4
E - 01010 Vitoria-Gasteiz
Spain
Tel.: +34 945 242 400
Fax: +34 945 228 883
osg-comaher@osg-comaher.com

OSG ITALIA

Via Cirenaica n. 52 int. 61/63
I - 10142 Torino
Italy
Tel.: +39 0117705211
Fax: +39 0117071402
info@osg-italia.it

OSG TURKEY

Rami Kışla Cad.No:56 Eyüp
Istanbul 34056
Turkey
Tel.+90 212 565 24 00
Fax: +90 212 565 44 00
info@osg-turkey.com

ROMSAN INTERNATIONAL CO. SRL

Reprezentant Exclusiv OSG
23-25, Nerva Traian Street
031044 Bucuresti
România
Tel.: +40 021 322 07 47
Fax: +40 021 321 56 00
romsan.int@romsan.ro

OSG EUROPE LOGISTICS S.A.

05/2016 - All rights reserved. © OSG Europe 2016.

The contents of this catalogue are provided to you for viewing only. They are not intended for reproduction either in part or in whole in this or other medium. They cannot be copied, used to create derivation work or used for any reason, by means without the express, written permission of the copyright owner. If prices are stated, they are netto unit-prices and any eventual tax(es) have to be added. The company is not responsible for any printing error in technical, price and/or any other data.

Tool specifications subject to change without notice.

www.osgeurope.com

